

Load Cell PCWL-L15

Features

- Stainless steel material, strong stability
- Suitable for various environments, IP68

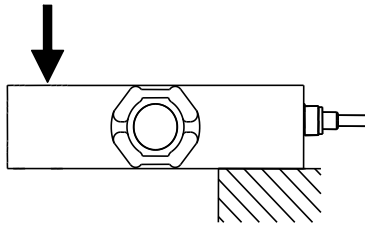


Applications

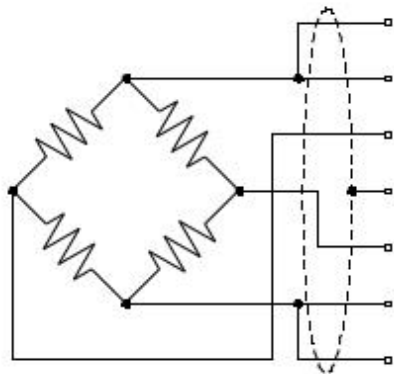
- Mainly used in various industrial weighing systems such as the food and pharmaceutical industry

Parameter performance	Technique
Capacity	10,20,50,100kg
Accuracy class	C3
Rated output	2.0±10% mV/V
Zero balance	±5%F.S.
Non-linearity	0.0166%F.S.
Hysteresis	0.0166%F.S.
Repeatability	0.018%F.S.
Creep(30min)	0.0166%F.S.
Temp.effect on output	0.0175%F.S./10°C
Temp.effect on zero	0.0125%F.S./10°C
Input impedance	390±5Ω
Output impedance	350±5Ω
Insulation	≥5000MΩ/100VDC
Recommended excitation	5V
Maximum excitation	12V
Compensated temp range	-10~40°C
Operation temp range	-10~50°C
Safe overload	150%F.S.
Ultimate overload	300%F.S.
Cable size	Φ5.4×3000mm
Weight approx.	0.5kg
Material	Stainless Steel (不锈钢)
IP Class	IP68
Max.platform size	500mm×400mm

Load direction

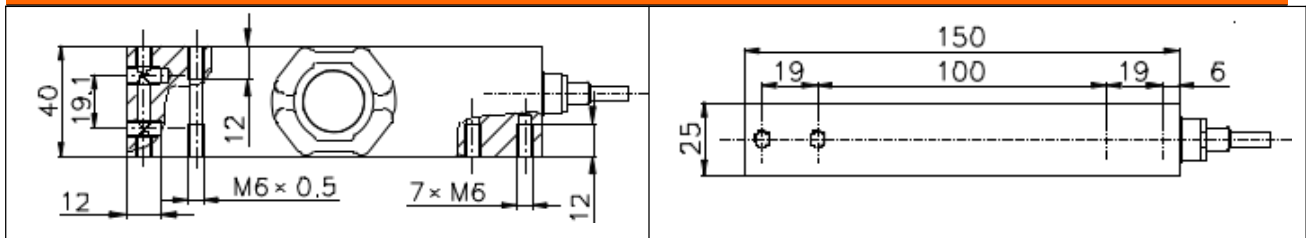


Structure and dimension



SEN+ Green (绿)
 EXC+ Blue (蓝)
 SIG+ White (白)
 Shield 屏蔽线
 SIG- Red (红)
 EXC- Black (黑)
 SEN- Grey (灰)

Mounting dimension



Wotian reserves the right to make any change in this publication without notice. The information provided is believed to be accurate and reliable as of this product sheet.

Contact us

Nanjing Wotian Technology Co.,Ltd.

website: www.wtsensor.com

Add: 5 Wenyong Road, Binjiang Development Zone, Nanjing, 211161, China

E-mail: dr@wtsensor.com