

Load Cell PCWL-L6

Features

- Aluminum alloy materials
- High precision and strong anti bias load ability
- Easy to install, IP65

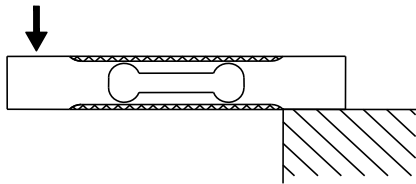
Applications

- Suitable for electronic scales, counting scales, electronic scales, and industrial weighing systems

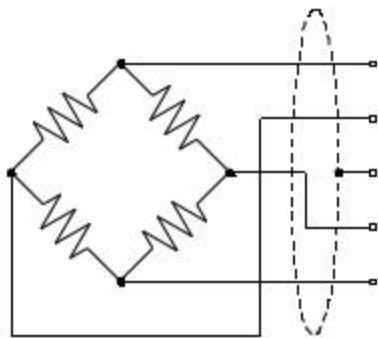


Parameter performance	Technique
Capacity	3,6,10,20 ,30kg
Accuracy class	C3
Rated output	2.0±10% mV/V
Zero balance	±2%F.S.
Non-linearity	0.015%F.S.
Hysteresis	0.015%F.S.
Repeatability	0.02%F.S.
Creep(30min)	0.017%F.S.
Temp.effect on output	0.02%F.S./10°C
Temp.effect on zero	0.02%F.S./10°C
Input impedance	405±10 Ω
Output impedance	350±5 Ω
Insulation	≥5000M Ω /100VDC
Recommended excitation	5~15V
Maximum excitation	20V
Compensated temp range	-10~40°C
Operation temp range	-20~60°C
Safe overload	150%F.S.
Ultimate overload	300%F.S.
Cable size	Φ4×3000mm
Material	aluminum alloy
IP Class	IP65
Max.platform size	300mm×300mm

Load direction

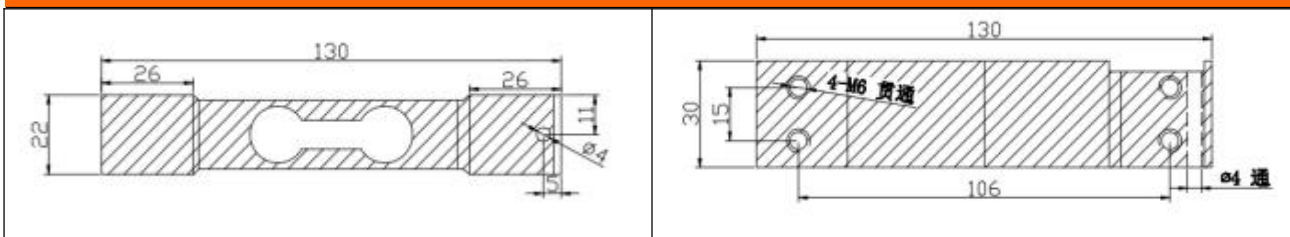


Structure and dimensions



EXC+ Red (红)
 SIG+ Green(绿)
 Shield 屏蔽线
 SIG- White(白)
 EXC- Black(黑)

Mounting dimension



Wotian reserves the right to make any change in this publication without notice. The information provided is believed to be accurate and reliable as of this product sheet.

Contact us

Nanjing Wotian Technology Co.,Ltd.

website: www.wtsensor.com

Add: 5 Wenying Road, Binjiang Development Zone, Nanjing, 211161, China

E-mail: dr@wtsensor.com