

## Load Cell PCWL-4M

### Features

- Aluminum alloy material
- High precision and strong anti bias load ability
- Easy to install, IP65

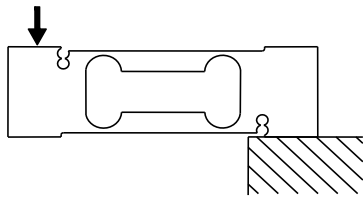


### Application

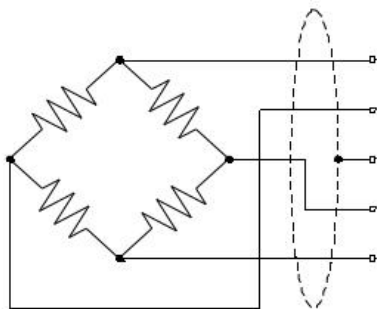
- Applied in electronic scales, counting scales, electronic scales, and industrial weighing systems

| Parameter performance   | Specification  |
|-------------------------|--|
| Capacity                | 300g,500g,1,1.5,2,3,4 kg                             |
| Accuracy class          | C3   |
| Output sensitivity      | 1.0±10% $mV/V$ (300g,500g)<br>2.0±10% $mV/V$ (1~5kg) |
| Zero point output       | ±2%F.S.  |
| Non-linearity           | 0.015%F.S.   |
| Hysteresis              | 0.015%F.S.   |
| Repeatability           | 0.015%F.S.   |
| Creepage(30min)         | 0.0166%F.S.  |
| Temp. sensitivity drift | 0.017%F.S./10℃                                       |
| Zero temp. drift        | 0.02%F.S./10℃  |
| Input impedance         | 380±40Ω  |
| Output impedance        | 380±40Ω  |
| Insulation              | ≥5000MΩ/100VDC                                       |
| Recommended excitation  | 5~15V  |
| Maximum excitation      | 20V  |
| Compensated temp. range | -10~40℃  |
| Operating temp. range   | -25~70℃  |
| Safe overload           | 150%F.S.   |
| Ultimate overload       | 300%F.S.   |
| Cable size              | Φ4×400mm   |
| Material                | aluminum alloy                                       |
| IP Class                | IP65   |
| Max.platform size       | 200mm×200mm  |

**Load direction**

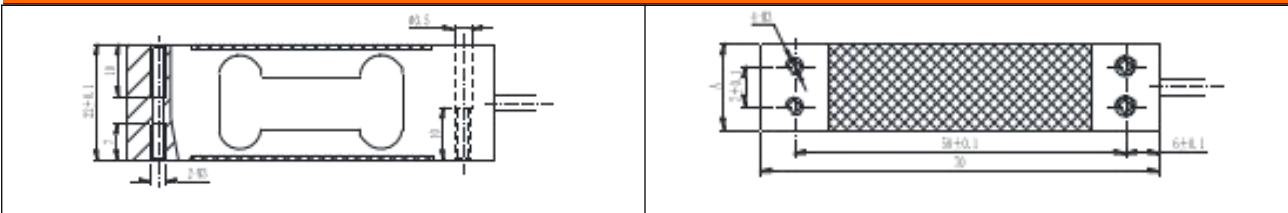


**Structure and dimension**



- EXC+ Blue (蓝)
- SIG+ White(白)
- Shield 屏蔽线
- SIG- Red (红)
- EXC- Black(黑)

**Mounting dimension**



**Pressure range selection**

| Capacity      | A  |
|---------------|----|
| 300g,500g,1kg | 12 |
| 2,3 ,5 kg     | 15 |

Wotian reserves the right to make any change in this publication without notice. The information provided is believed to be accurate and reliable as of this product sheet.

**Contact us**

Nanjing Wotian Technology Co.,Ltd.  
 website: [www.wtsensor.com](http://www.wtsensor.com)  
 Add: 5 Wenying Road, Binjiang Development Zone, Nanjing, 211161, China  
 E-mail: [dr@wtsensor.com](mailto:dr@wtsensor.com)